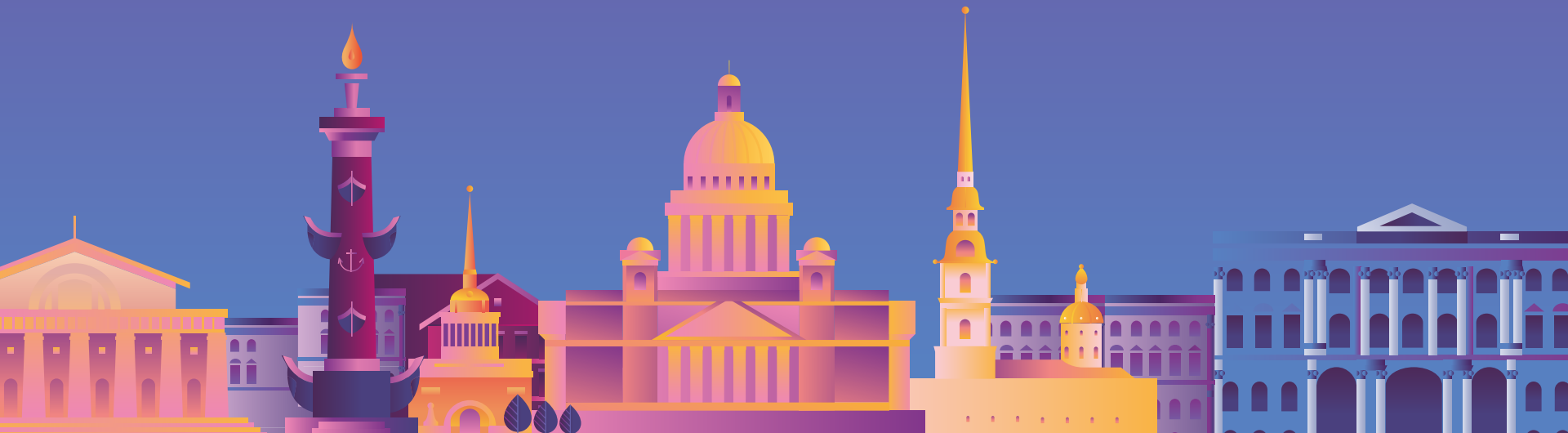




# STATION

hotels





## «Station» hotel chain

Saint Petersburg, Yekaterinburg



3 and 4 star hotels



All hotels in the very city center



Close to metro and train stations



Free Wi-Fi



Air-Conditioning



Catering for tourist groups



Rooms: Double, Twin, Triple, Quadriple



Excursion service



Tea and coffee facilities 24 hours



24 hour front desk

## Free Services

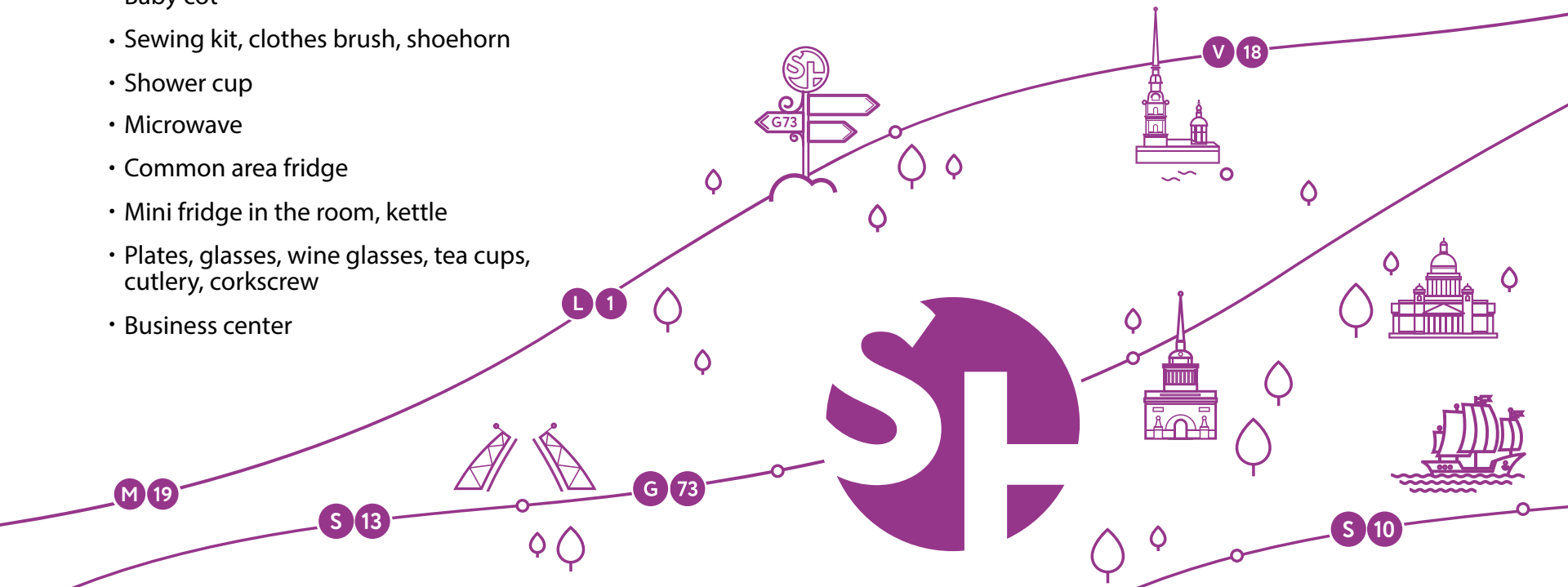
- Wi-Fi
- Computer with Internet access
- 24-hour reception
- Bellboy service
- Safe at the reception
- Satellite television
- Ironing board, iron
- Drinking water cooler

### **Upon request:**

- Baby cot
- Sewing kit, clothes brush, shoehorn
- Shower cup
- Microwave
- Common area fridge
- Mini fridge in the room, kettle
- Plates, glasses, wine glasses, tea cups, cutlery, corkscrew
- Business center

## Paid services

- Lunch and dinner for tourist groups and individual guests
- Room service
- Taxi and group transfer
- Laundry services
- Bathrobe rental
- Essential goods mini market
- Beverages and snacks
- Giftshop
- Excursion service





Zheleznovodskaya ul.

Sportivnaya (M)

pr. Dobrolyubova

Konverskaya nab.

Peter and Paul Fortress

Kutuzov embankment

Summer Garden

Palace embankment

Neva

Makarova embankment

Vasilyevsky Island

17-ya liniya VO.

8-ya liniya VO.

Kadetskaya lin. VO.

Prospekt Bolshoy VO.

Prospekt Bolshoy VO.

Leytenanta Shmidt embankment

Museum Erarta

27-ya liniya VO.

Bronze Horseman

Admiralteyskaya (M)

St. Isaac's Cathedral

Nevsky avenue

Nevsky avenue

Bol'shaya Morskaya Ulitsa

ul. Truda

S10

S13

Spasskaya (M)

Sennaya ploshad'

G73

Mariinsky Theatre

Sadovaya St.

Zvenigorodskaya (M)

Pushkinskaya (M)

ul. Pravdy



## Our hotels in Saint Petersburg

S 10

Station S10  
Stolyarny pereulok, 10-12 A  
42 rooms  
Max 90 people

S 13

Station S13  
Kaznacheiskaya, 6/13  
57 rooms  
Max 120 people

L 1

Station L1  
Ligovsky, 1  
105 rooms  
Max 112 people

M 19

Station M19  
Marata, 19  
81 rooms  
Max 172 people

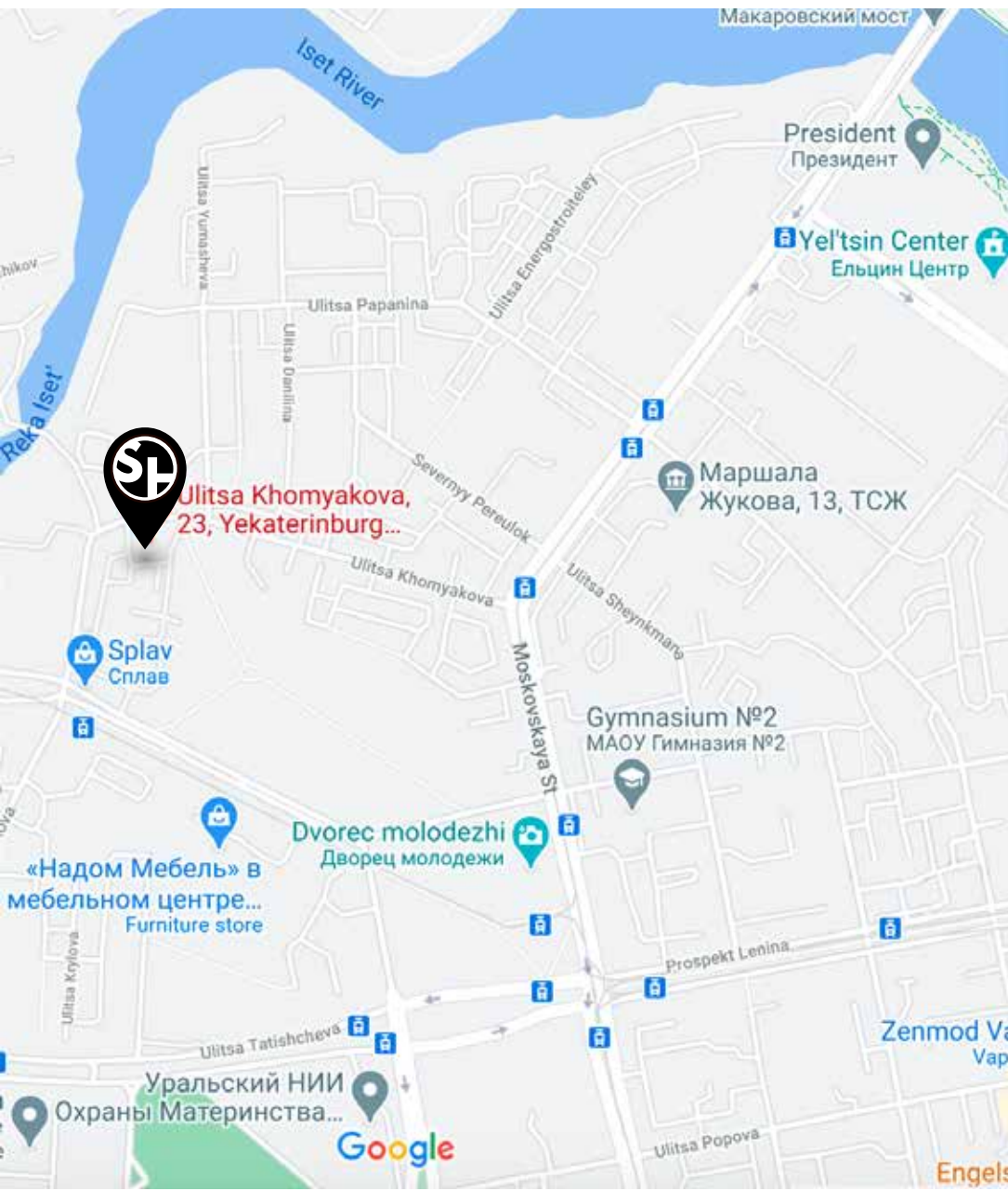
G 73

Station G73  
Gorohovaya, 73  
6 rooms  
Max 13 people

V 18

Station V18  
Kolokol'naya, 2/18  
61 rooms  
Max 122 people

# Our hotels in Yekaterinburg



 **STATION**

UralOtel

★★★★

Station Hotel UralOtel  
ul. Khomyakova, 23  
49 rooms  
Max 100 people





## Premier V18

Kolokol'naya St., 2/18  
61 rooms



Metro: Vladimirskaya, Dostoevskaya  
Near: Dostoevsky Museum, Tovstonogov Bolshoi  
Drama Theater, The Lensoviet Academic Theatre.



Standard room, Station Premier V18



Building facade, Station Premier V18



Comfort room, Station Premier V18



Room area from 15 m<sup>2</sup> to 32 m<sup>2</sup>



Air-Conditioning



Free Wi-Fi



LCD/Satellite TV (SAT TV)



Elevator



Common area with cafe and bar



We can accommodate:  
53 Twin/ 8 Dbl



Bathrobe and Slippers



Safe



Fridge

# Conference room next to Station Premier V18

Hall area is 89,6 m<sup>2</sup>

up to 70 people



Theater, 70 people



Cabaret, 28 people/21 people.



Flipchart



Screen



Sound-reinforcement system



Projector



Lunch/dinner



Coffee break



Parking





## Premier S10

Stolyarny pereulok, 10-12 A  
42 rooms



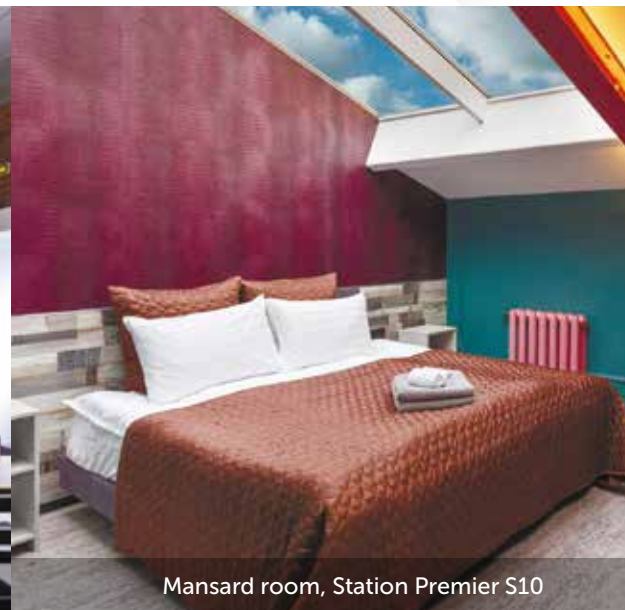
Metro: Sadovaya, Sennaya, Spasskaya  
Near: Griboyedov channel embankment,  
Raskolnikov House, Mariinsky Palace,  
Lion's Bridge, New Holland Island



Standard room, Station Premier S10



Common area with cafe and bar, Station Premier S10



Mansard room, Station Premier S10



Room area from 12 m<sup>2</sup> to 20 m<sup>2</sup>



Air-Conditioning



Free Wi-Fi



LCD/Satellite TV (SAT TV)



Elevator



Common area with cafe and bar



We can accommodate:  
19 Twin/ 19 Db/ 4 Single



Bathrobe and Slippers



Safe



Fridge

# STATION

S13

Kaznacheyeskaya, 6/13  
57 rooms



Metro: Sadovaya, Sennaya, Spasskaya  
Near: Yusupov gardens, Griboyedov channel embankment,  
Raskolnikov House, Mariinsky Palace, Lion's Bridge



Standard room, Station S13



Common area with cafe and bar, Station S13



Breakfast, Station S13



Room area from 12 m<sup>2</sup> to 20 m<sup>2</sup>



Air-Conditioning



Free Wi-Fi



LCD/Satellite TV (SAT TV)



Common area with cafe and bar



We can accommodate:  
41 Twin/16 Dbl



Elevator

# Conference room at Station S13, next to Station S10

Hall area is 60 m<sup>2</sup>

up to 64 people



U-shape seating



Classroom seating,



Theatre seating



Flipchart



Screen



Sound-reinforcement system



Projector



Panoramic windows



Entrance from inside and outside



Lunch/dinner



Coffee break



# STATION

L1

Ligovsky Prospekt, 1  
105 rooms



Metro: Vosstaniya Square, Chernyshevskaya  
Near: Nekrasov Garden, Moscow Railway Station,  
Nevsky avenue, Tauride Garden



Mansard room, Station L1



Breakfast, Station L1



Comfort room, Station L1



Room area from 12 m<sup>2</sup> to 20 m<sup>2</sup>



Air-Conditioning



Free Wi-Fi



LCD/Satellite TV (SAT TV)



Common area with kitchenette



We can accommodate:  
88 TWIN / 17 DBL

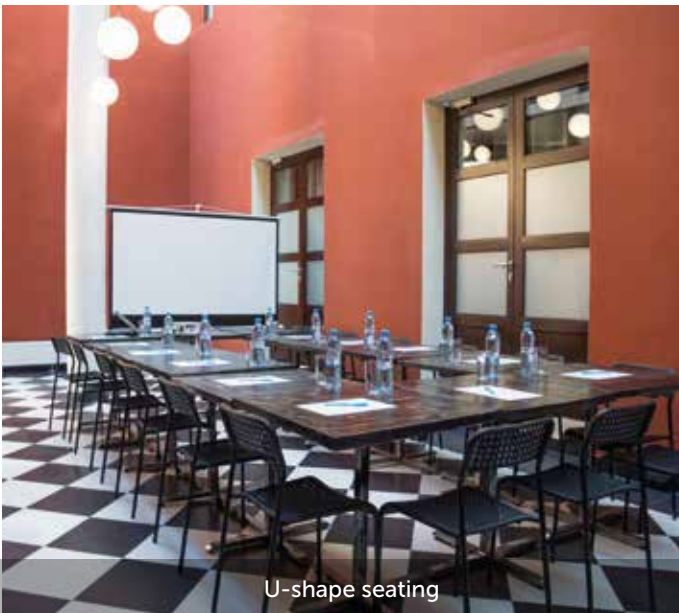


Elevator

# Conference room at Station L1

Hall area is 50 m<sup>2</sup>

up to 48 people



U-shape seating



Classroom seating



Theatre seating



Flipchart



Screen



Projector



Panoramic windows



Lunch/dinner



Coffee break



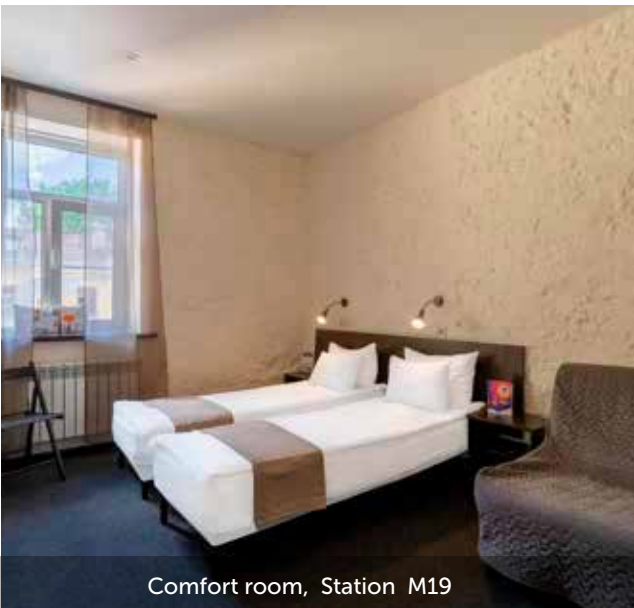
# STATION

M19

Marata street, 19  
81 rooms



Metro: Mayakovskaya, Ploshchad Vosstaniya  
Near: Nevsky avenue, Moscow Railway Station,  
Dostoevsky Museum, Monument to Alexander Pushkin



Comfort room, Station M19



Breakfast, Station M19



Standard room, Station M19



Room area from 12 m<sup>2</sup> to 20 m<sup>2</sup>



Free Wi-Fi



LCD/Satellite TV (SAT TV)



Common area with kitchenette



We can accommodate:  
63 TWIN / 18 DBL

# STATION

G73

Gorokhovaya street, 73  
6 rooms



Metro: Zvenigorodskaya, Pushkinskaya  
Near: Fontanka River, Vitebsky Railway Station, Aquarium



Comfort room, Station G73



Common area, Station G73



Standart room, Station G73



Room area from 12 m<sup>2</sup> to 20 m<sup>2</sup>



Air-Conditioning



Free Wi-Fi



LCD/Satelite TV (SAT TV)



Common area with kitchenette



We can accommodate:  
1 TWIN / 5 DBL



Self check-in

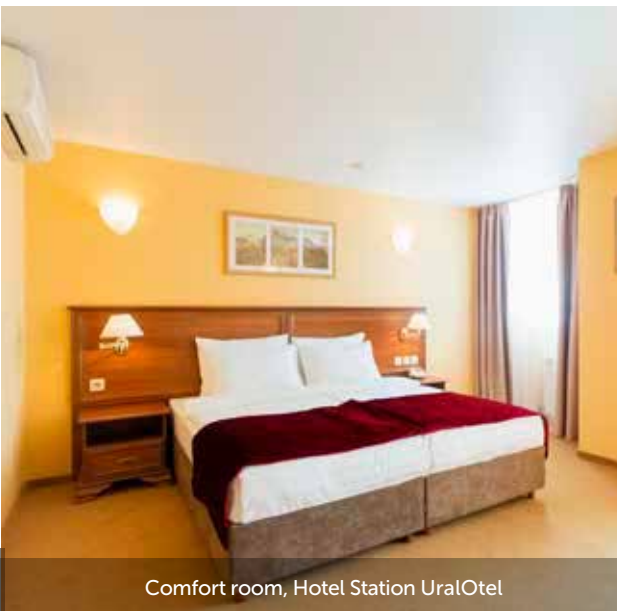
# STATION

## UralOtel

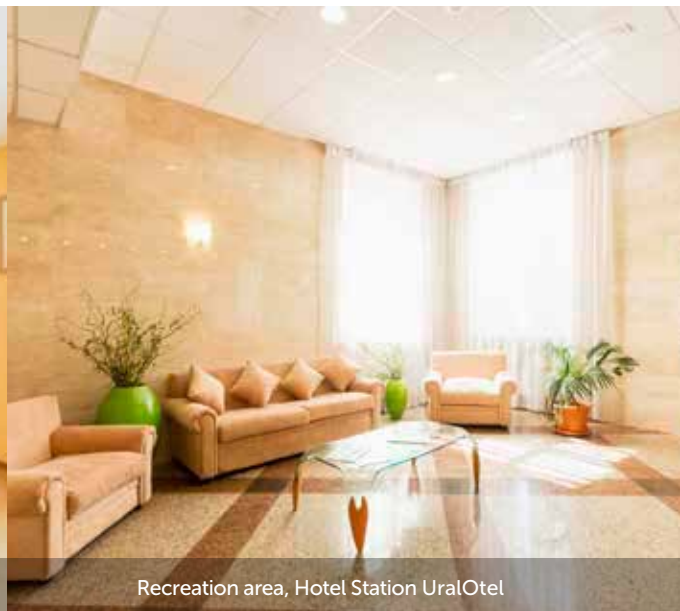
Yekaterinburg, ul. Khomyakova, 23  
49 rooms



Near: Railway Station  
Yekaterinburg City, Yeltsin Center,  
Yekaterinburg Arena.



Comfort room, Hotel Station UralOtel



Recreation area, Hotel Station UralOtel



Comfort room, Hotel Station UralOtel



Room area from 17 m<sup>2</sup> to 50 m<sup>2</sup>



Air-Conditioning



Free Wi-Fi



LCD/Satellite TV (SAT TV)



Parking



Elevator



Common area with cafe and bar



We can accommodate:  
40 Twin/ 49 Dbt



Bathrobe and Slippers



Fridge



Safe



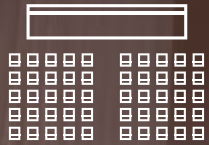
Sauna



# Conference hall at the Station Uralotel Hotel

Hall area is 57 m<sup>2</sup>

Up to 50 people



Theater, 50 people



O-Shape, 24 people



T-Shape, 20 people



U-Shape, 20 people



Flipchart



Screen



Projector



Coffee break



Lunch/dinner



Parking



Sales department

199123, St.Petersburg,  
36 Shpalernaya str., office 221

tel: +7 (812) 748-20-77  
Email: [sales@station-hotels.ru](mailto:sales@station-hotels.ru)

[www.station-hotels.ru](http://www.station-hotels.ru)

[vk.com/stationhotels](https://vk.com/stationhotels)  
[instagram.com/station\\_hotels](https://instagram.com/station_hotels)  
[facebook.com/stationhotels](https://facebook.com/stationhotels)